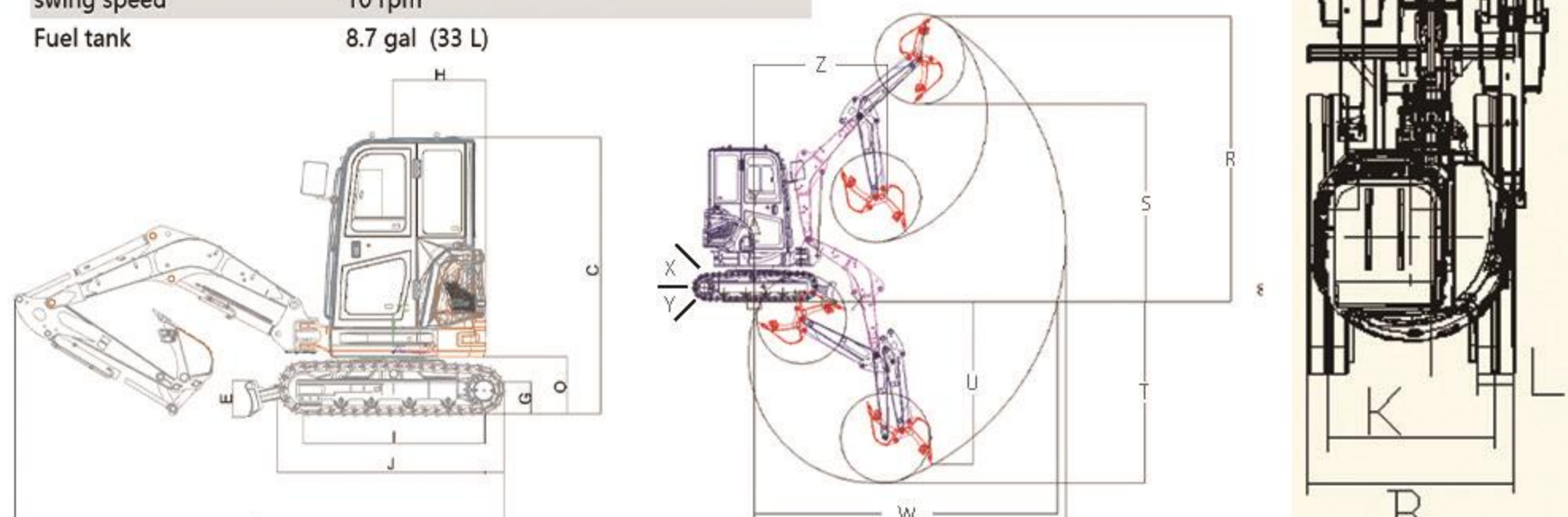
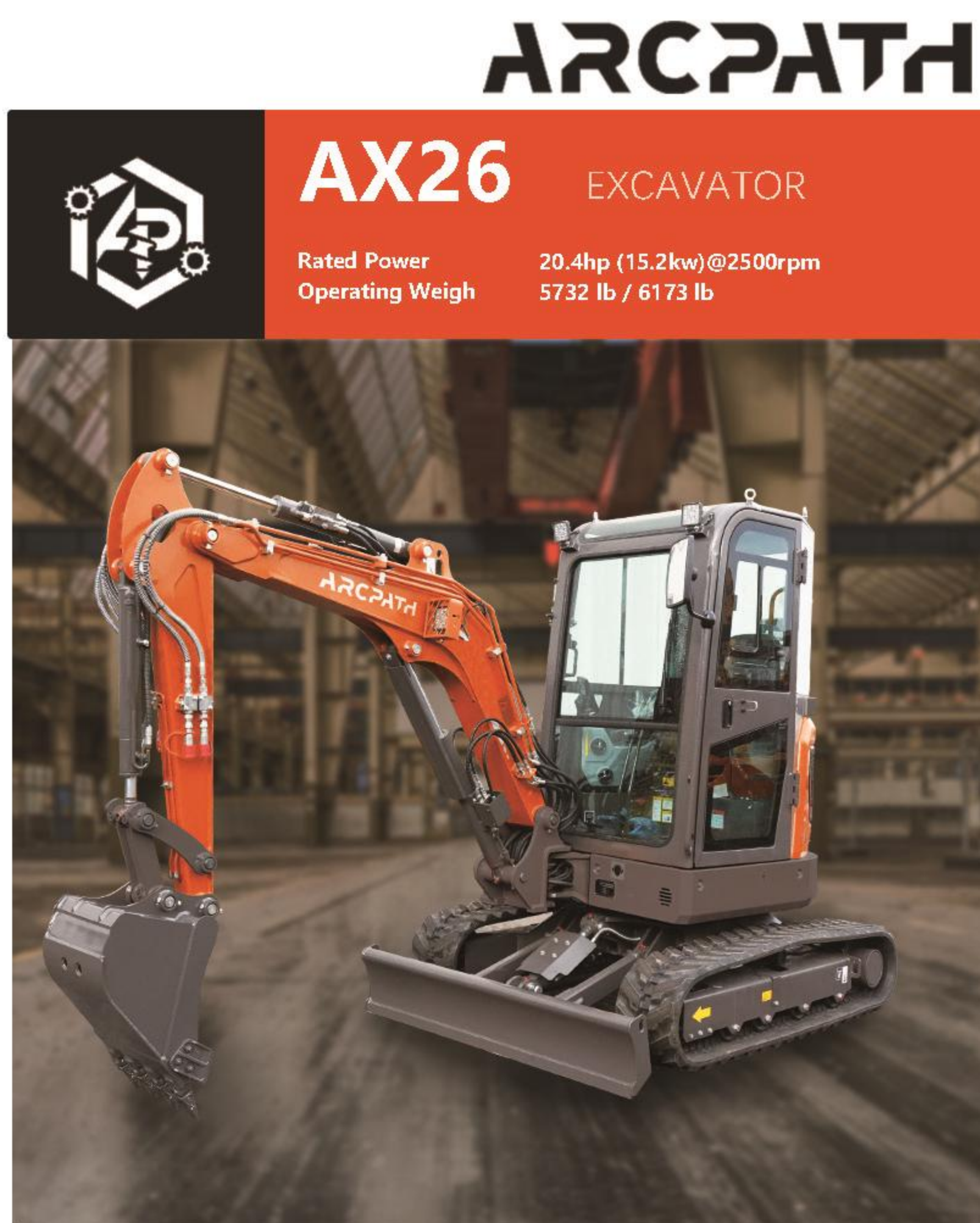


# Specifications

Operating Weight	5732 lb (2600 kg) / 6173 lb (2800 kg)
Ground Contact Pressure	3.87 psi (0.27 kgf/cm <sup>2</sup> )
Engine Model	Yanmar 3TNV80F
Output	20.4 hp (15.2kw) / 2500 rpm
Displacement	77.32 cu.in (1.267L)
Pump capacity	23.8 gpm (90 L/min)
Auxiliary hydraulic flow	12.2 gpm (46 L/min)
Travel Motor	NACHI
Travel speed	1.55/2.8 mph (2.5/4.5 km/h)
Swing motor	NACHI
Swing speed	10 rpm
Fuel tank	8.7 gal (33 L)



Overall Length	A 166.5 in (4230 mm)	Upper Structure Ground Clearance	O 19.7 in (500mm)
Overall Width	B 61 in (1550 mm)	Swing System Offset Left	P 18.3 in (466 mm)
Overall Height	C 95.5 in (2425 mm)	Swing System Offset Right	Q 28 in (712 mm)
Dozer Blade Height	E 11.8 in (300 mm)	Max. Digging Height	R 176.4 in (4480 mm)
Dozer Blade Width	F 61 in (1550 mm)	Max. Dumping Height	S 122 in (3098 mm)
Min. Ground Clearance	G 11.8 in (300 mm)	Max. Digging Depth	T 112 in (2845 mm)
Min. Tail Turning Radius	H 30.5 in (775 mm)	Max. vertical Digging Depth	U 100 in (2550 mm)
Tumbler Distance	I 61.4 in (1560 mm)	Max. Digging Radius	V 192.4 in (4887 mm)
Crawler Length	J 78.3 in (1990 mm)	Max. Digging Radius, At Ground Level	W 187.7 in (4768 mm)
Track Gauge	K 49.2 in (1250 mm)	Dozer Blade Max. lift Above Ground	X 14 in (360 mm)
Shoe Width	L 11.8 in (300 mm)	Dozer Blade Max. Drop Below Ground	Y 13 in (340 mm)
		Min. Turning Radius	Z 82 in (2080 mm)



## AX26 EXCAVATOR

Reliability is non-negotiable for us, and the AX26 featuring its tailless design is no exception. Trusted by professional companies and occasional users alike, this machine is built with key components sourced from the world's top premium brands. From the Yanmar Tier 4 engine to the NACHI travel motor, every element is meticulously chosen for optimal reliability, durability, and enhanced performance.

# ARCPATH

### Easy maintenance



The AX26 is designed for ease of maintenance, featuring wide-open panels for quick access to key components. Essential service points including the engine oil, starter motor, alternator, air filter, fuel and hydraulic tanks, and the main control valve are all conveniently within reach, simplifying upkeep and ensuring efficient operation.



### Engine

Powered by the YANMAR Tier IV engine, the AX26 delivers an impressive 20.4 HP of rated power. Designed for peak reliability, it reduces vibration and ensures lasting durability. Effortlessly handling the toughest jobs, it's a powerhouse of efficiency and strength.



### Load Sensing Flow

Load Sensing Flow Sharing offers precise control, optimized hydraulics for efficiency, operator-friendly handling, and fuel savings through intelligent flow regulation.

### Auto Idle

Auto Idle effortlessly conserves fuel by automatically lowering engine RPM when high speed isn't necessary. After the control levers have been in neutral for 4 seconds, the engine idles, quickly returning to speed when controls are activated.



### Auxiliary diverter

The auxiliary diverter control valve streamlines operation by allowing the attachment of a second hydraulic accessory without the need to disconnect the primary one.



### Multi-function electronic joystick

The multi-function electronic joystick allows easy and precise control.



### AX26 Cab

### Tailless design

Tailless design perfect for narrow job sites. Enjoy a remarkable turning radius, ensuring exceptional maneuverability in tight spaces.



### AX26

### Attachments

Beyond standard features, our machine supports a range of attachments like grading buckets, hammers, rippers, clamps, and quick couplers. Each is crafted to boost operational efficiency, offering a complete solution for diverse tasks.



Kubota



YANMAR



Nabtesco



Danfoss



NACHI



AX26 EXCAVATOR

