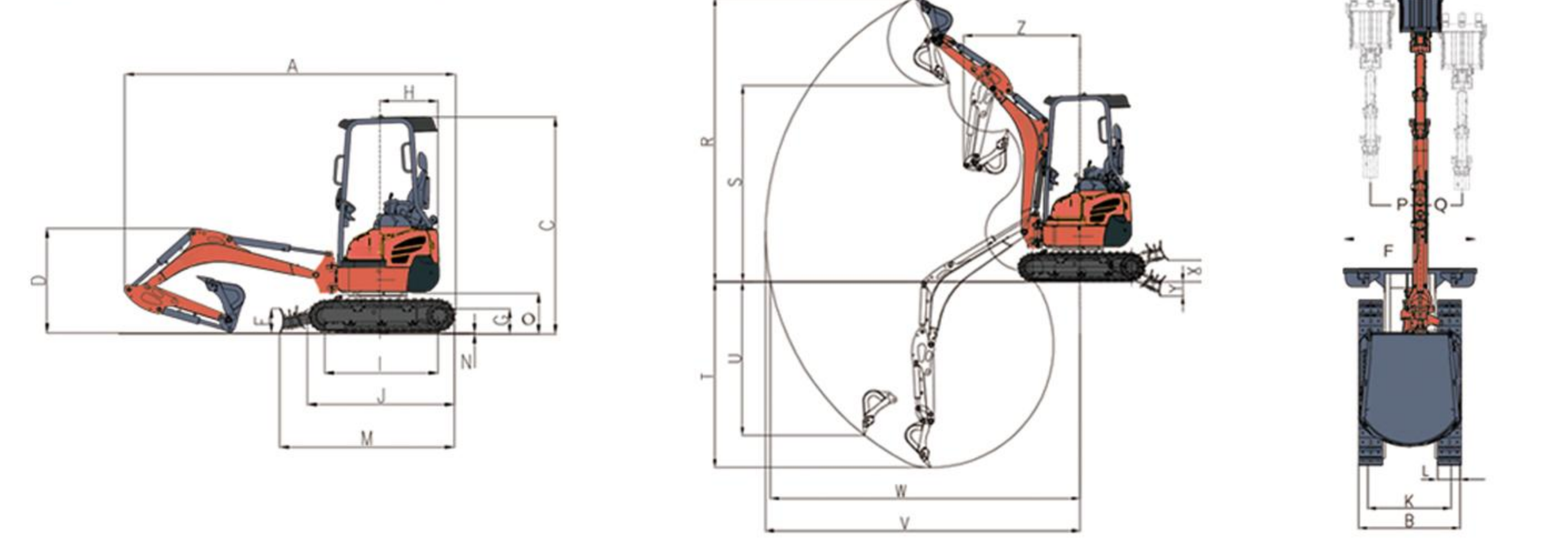


# Specifications

Operating Weight (Canopy/Cab)	3990 lb (1810 kg) / 4409 lb (2000 kg)
Ground Contact Pressure (Canopy/Cab)	4.1 psi (0.29 kgf/cm <sup>2</sup> ) / 4.5 psi (0.32 kgf/cm <sup>2</sup> )
Engine Model	Yanmar 3TNV74F
Output	15.4 hp (11.5 kW) @ 2400 rpm
Displacement	61 cu. in (0.99 L)
Hydraulic System Main Pump	NACHI
Pump Capacity	11.93 gpm (45 L/min)
Auxiliary Hydraulic Flow	7.5 gpm (28.4 L/min)
Travel Motor	NACHI
Travel Speed	1.2/2.3 mph (1.9/3.7 km/h)
Swing Motor	EATON
Swing Speed	9 rpm
Control Valve	Nabtesco
Fuel Tank	5 gal (19 L)



Overall Length	A 147 in (3575 mm)	Grouser Height	N 0.65 in (16.5 mm)
Overall Width	B 39/50.4 in (990/1280 mm)	Upper Structure Ground Clearance	O 17.2 in (438 mm)
Overall Height	C 92.5 in (2347 mm)	Swing System Offset Left	P 18.9 in (481 mm)
Working Device Height	D 44 in (1120 mm)	Swing System Offset Right	Q 15.8 in (402 mm)
Dozer Blade Height	E 10.2 in (258 mm)	Max. Digging Height	R 139 in (3540 mm)
Dozer Blade Width	F 39/50.4 in (990/1280 mm)	Max. Dumping Height	S 96 in (2440 mm)
Min. Ground Clearance	G 5.9 in (150 mm)	Max. Digging Depth	T 91 in (2310 mm)
Min. Tail Turning Radius	H 25 in (640 mm)	Max. Vertical Digging Depth	U 75 in (1910 mm)
Tumbler Distance	I 48.4 in (1230 mm)	Max. Digging Radius	V 154 in (3905 mm)
Crawler Length	J 63 in (1593 mm)	Max. Digging Radius, At Ground Level	W 151 in (3845 mm)
Track Gauge	K 30/41.3 in (760/1050 mm)	Dozer Blade Max. Lift Above Ground	X 10.5 in (266 mm)
Shoe Width	L 9.1 in (230 mm)	Dozer Blade Max. Drop Below Ground	Y 7 in (176 mm)
Ground Length	M 74.6 in (1895 mm)	Min. Turning Radius	Z 57 in (1443 mm)

# ARCPATH

## AX18 EXCAVATOR

Rated Power 15.4 hp (11.5 kW) @ 2400 rpm  
Operating Weight 3990lb/ 4409lb



## AX18 EXCAVATOR

Reliability is non-negotiable for us, and the AX18 featuring its tailless design is no exception. Trusted by professional companies and occasional users alike, this machine is built with key components sourced from the world's top premium brands. From the Yanmar Tier 4 engine to the NACHI hydraulic system and travel motor, every element is meticulously chosen for optimal reliability, durability, and enhanced performance.

### Engine

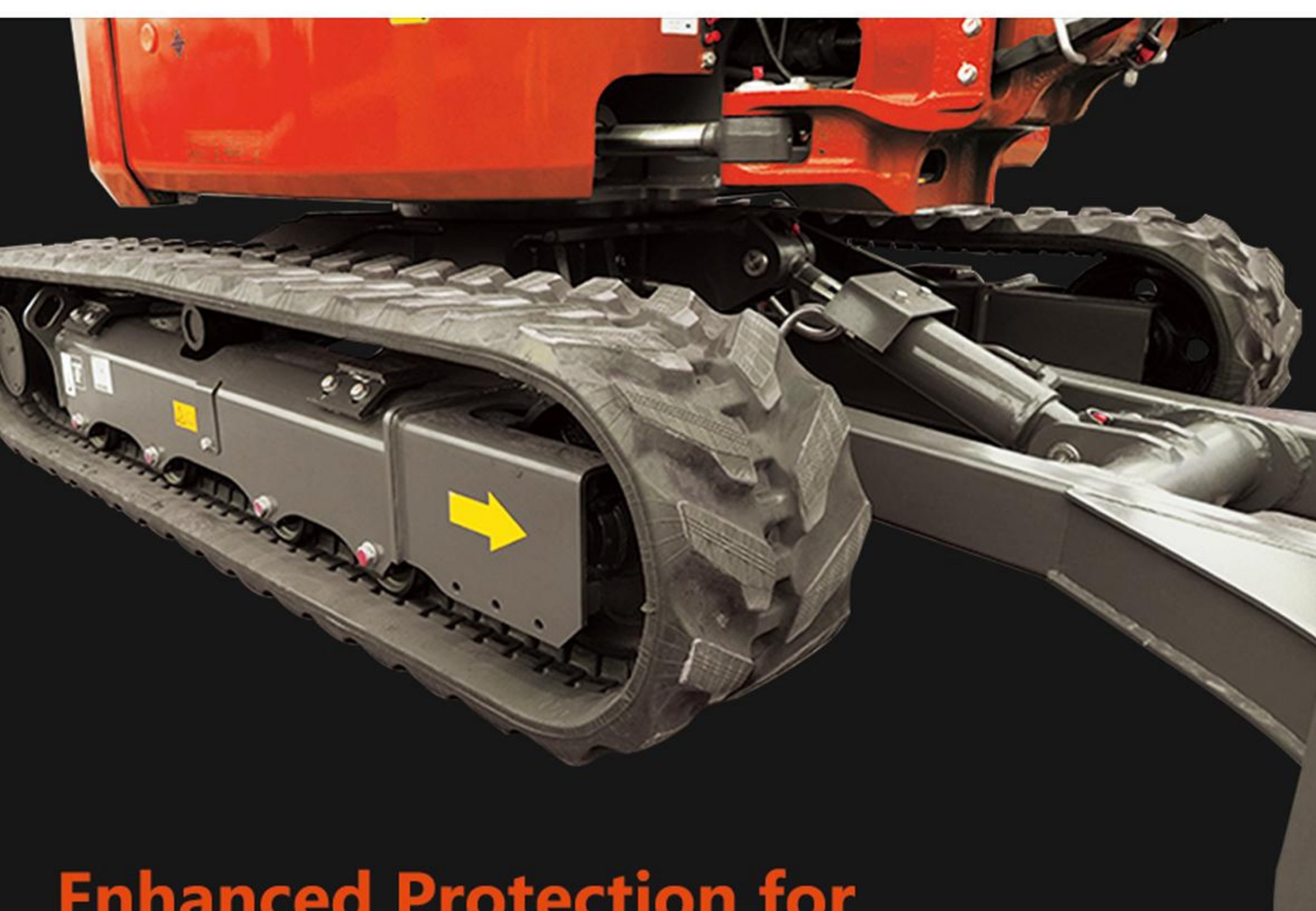


Powered by the YANMAR Tier IV engine, the AX18 delivers an impressive 11.5kW of rated power. Designed for peak reliability, it reduces vibration and ensures lasting durability. Effortlessly handling the toughest jobs, it's a powerhouse of efficiency and strength.

### Easy Maintenance



The AX18 is designed for ease of maintenance, featuring wide-open panels for quick access to key components. Essential service points including the engine oil, starter motor, alternator, air filter, fuel and hydraulic tanks, and the main control valve are all conveniently within reach, simplifying upkeep and ensuring efficient operation.



### Enhanced Protection for Chassis Travel Motor Pipelines

The AX18 features travel motor hoses enclosed within the track frame, a design choice that significantly cuts repair costs and boosts durability, showcasing our commitment to thoughtful engineering and long-term value.

### Load Sensing Hydraulic System

Our cutting-edge technology precisely matches hydraulic power to task demands, optimizing performance while saving energy for efficient and effective operation.

### Reinforced Boom Construction: Superior Strength and Extended Lifespan

Our excavator's boom is engineered with a high-strength, box-hollow structure and a cast steel frame, using advanced robotic welding for superior strength. Key components, including the arm and bucket, are reinforced with NM400 anti-wear steel, extending service life by an estimated 30%, ensuring unparalleled reliability and longevity.



### Boom Swing

Maximize efficiency in narrow jobsites with our excavator's boom swing feature. The boom can independently slip to the left or right through the boom swing bracket, eliminating the need for frequent machine movement during boundary operations, such as precision



### AX18 Cab

### Tailless Design for Narrow Jobsites

Tailless design delivers a remarkable turning radius of only 25.2 in, making it exceptionally well-suited for work in narrow jobsites. Enhanced adaptability is achieved through features like the telescopic chassis, width-adjustable dozer blade, providing the machine with excellent crossing ability.



### AX18

### Attachments

Beyond standard features, our machine supports a range of attachments like grading buckets, hammers, rippers, clamps, augers, and quick couplers. Each is crafted to boost operational efficiency, offering a complete solution for diverse tasks.



Subject to Change Without Prior Notice